



This Brief is Classified:
UNCLASSIFIED/FOUO

Communications Systems Directorate, J6

Ken Barber
Communication
Planner
JTF-CS/J6

Agenda



- **J6 Mission / Vision / Goals / Tasks**
- **Deployable Communications Capabilities**
- **Concept of Employment**
- **Manning**

Agenda



- **J6 Mission / Vision / Goals / Tasks**
- **Deployable Communications Capabilities**
- **Concept of Employment**
- **Manning**



J6 Mission/Vision Statement

Mission Statement

Provide, operate, maintain, and manage communications systems, and provide communications planning expertise to support JTF-CS' **daily mission**, of planning and integrating DOD support to the primary and coordinating federal agencies for domestic CBRNE consequence management (CM) operations, as well as its **mission to deploy** and execute **timely and effective command and control** of designated DOD forces providing support to civil authorities to save lives, prevent injury, provide temporary critical life support.

Vision Statement

Leverage technology and available resources to ensure JTF-CS has **uninterrupted access to critical information** to facilitate **garrison CBRNE planning** and **deployed CBRNE operations**.



J6 Key Tasks

- **Ensure readiness of deployable comm systems**
- **Serve as member of Command Assessment Element (CAE) and Joint Planning Group (JPG); assist with drafting Commander's Estimate**
- **Provide communications planning expertise to the deliberate and crisis action planning processes**
- **Establish connectivity and direct JTF-CS comm support in a deployed environment during CM event/operations**
- **Establish and manage Joint Network Operations (NetOps) Control Center (JNCC) to direct the operation of DoD comm resources in JOA**
- **Ensure interoperability of comm systems to facilitate CM ops**
- **Participate in the Joint Reception Center (JRC) JRSOI process to ensure responding units receive updated comm plans**
- **Facilitate the J3-led command information management efforts**
- **Direct JTF-CS in-garrison comm systems support**



J6 Focus Areas / Functions

- **Steady State/Garrison**
- **Deployable Teams**
- **Forward Command Post Operations**
- **Task Force C4 Coordination**
- **Mission Assignments – ESF-2 Support**



Key to the success of each function is
the integration of new technology and proper manning!

Agenda



- J6 Mission / Vision / Goals / Tasks
- **Deployable Communications Capabilities**
- Concept of Employment
- Manning



Current Deployable C4 Capabilities



C2 Vehicle

Supports Commander, JTF-CS & NSAT

- 2 Personnel (Plus Driver)
- Secure/non-secure data and voice (PSTN/DSN/STE)
- Tactical Voice (LMR, UHF radio)
- Satellite TV, Radio, and GPS
- Spectrum Requirements: INMARSAT, IRIDIUM, PRC-117F, DSS TV, XM Sat Radio, UHF/VHF Intra Squad, Scanner, 800Mhz, Incident Command Radio Interface (ICRI) node



TACPAC Light
GCS - Vanguard

Supports CJTFCS/JPAC/JRC/LNOs (up to 5 people)

(Executive Comms)

- 1 Box/Bag Solution @ 45 lbs
- 15 – 30 Minute Setup (Manual Point Dish)
- 64 Kbps
- SIPR/NIPR/Phones (User selected service)
- On Demand bandwidth (commercial)

• 4 systems on hand



TACPAC Medium
GSI - Auto-Explorer
1.2Meter

Supports CAE/JPAC (up to 30 people)

- 8 Case Solution @ 45/90 lbs each
- 30-45 Minute Setup (Auto Point Dish)
- 1.5 Mbps (Surge Capacity Available to 2.5Mbps)
- SIPR/NIPR/Phones/VTC (Simultaneously)
- 24/7 Availability of bandwidth (DISA)

• 3 systems on hand



TACPAC Heavy
Modular Data/Voice
Package – 2.4Meter
USC60A

Supports Forward CP (> 200 people); Extends garrison services to JOA

- 3 Pallets
- 2 Hour Setup/CP Services within 12 Hours
- 2.5 Mbps/5+Mbps (Satellite Initial/Terrestrial Augmentation)
- NIPRNET/SIPRNET/Phones (PSTN/DSN/DRSN)
- Tactical radios
- VTC/Audio-visual/Direct Broadcast TV
- TRI-BAND/TDMA/FDMA Capable with USC-60. Ku TDMA with SWEDISH



Team Deployable C4

<u>Deployable Team</u>	<u>C4 Tools</u>	<u>Key Capabilities</u>	<u>Transport and Setup Reqts</u>	<u>CONOPS Issues</u>
LNO (Executive Comms)	TACPAC (Lite) Cell Phones, Blackberrys, Aircards GCS-Vanguard (INMARSAT) BGAN/Dataline (JEMPRS)	Web-based services 64Kbps – 448Kbps 5 pers One service / time Multi-Service / time	1 box/bag @45lbs 15-30 min setup (Commercial)	1 st option: LNOs will attempt to tie in with supported agency
JPAC / JTAC / JRC / JRSOI (Exec Comms +)	TACPAC (Lite / Med), Cell Phones, SVTC, Blackberrys, Aircards GCS-Vanguard (INMARSAT) SWEDISH (USC-68) BGAN/Dataline (JEMPRS)	Web-based services SVTC 64 Kbps – 5 Mbps 5-30 persons	Up to 8 cases @45/90lbs each 15-45 min setup (Comm / DISA Ku)	1 st option: JPAC will attempt to tie in with supported agency
NSAT (CAE)	TACPAC (Medium), Cell Phones, Blackberrys, Aircards, SVTC, C2V (C2OTM) GSI - Auto-Explorer-1.2M SWEDISH (USC-68)	Web-based services Tactical radio SVTC 1.5 Mbps – 5 Mbps 30 persons	Up to 8 cases @45/90lbs each 30-45 min setup (DISA Ku)	Deployable within 4 hours, web-based access only, TCAMO, C-17, C-130, C-5, Commercial Air
Forward Command Post W4W GBS ICE-S/DCT	TACPAC (Medium / Heavy), Cell, Blackberrys, Aircards, DCT, GBS, SVTC, C2V Mod Data/Voice USC-60A SWEDISH (USC-68)	Web-based and local services SVTC 2.5 Mbps – 5 Mbps >200 persons	3 pallets 2 hour initial setup 12 hrs for full setup W4W (DISA Ku)	Tailorable - Medium or Heavy config depends on msn & transport available C-17, C-130, C-5

Note1: During CBRNE Event, cellular, blackberry & aircards capabilities may not be available
Note 2: MECL with EOIP – most services are available simultaneously with EOIP

Agenda



- J6 Mission / Vision / Goals / Tasks
- Deployable Communications Capabilities
- **Concept of Employment**
- Manning
-



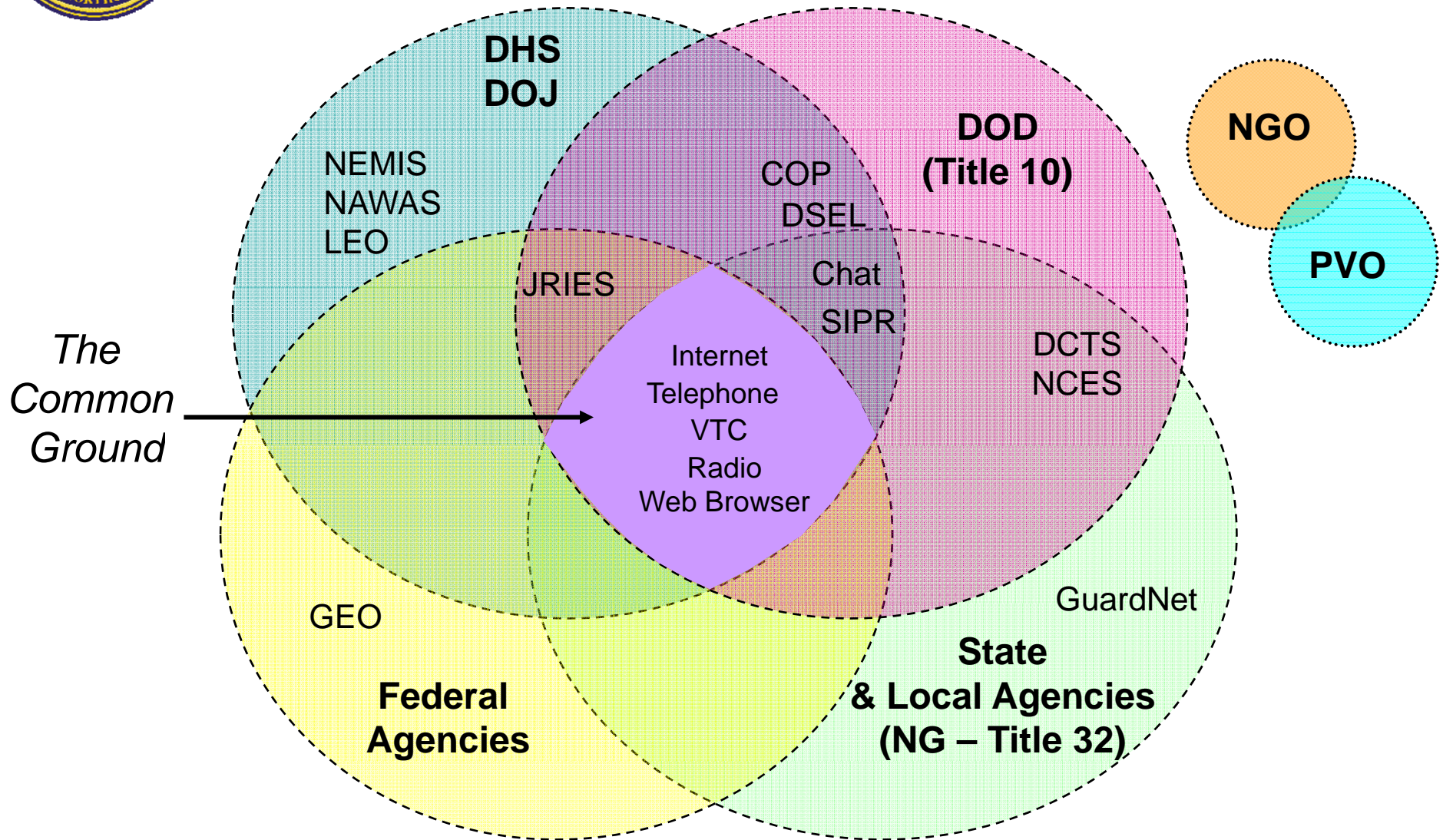
JTF-CS Comm Concept of Employment

Layered approach to communications for JTF-CS:

- Connectivity through base support installation
- GETS / WPS Cards
- Pager/Cell/Blackberry
- Wireless (Air) Cards
- Iridium
- Tactical Radio (HF, UHF)
- INMARSAT-based Light Tactical Augmentation Packages
 - BGAN upgrade
- KU-band Satellite Medium Tactical Augmentation Packages
- Multi-band Satellite Heavy Comms / Heavy Tactical Augmentation Package
- Wireless for the Warfighter (802.16 and 802.11)
- Terrestrial Comms (T1 available w/in 14-45 days)
 - Other...Cox Cable (researching legalities)
- ICE-S (Deployable Cell Tower)
- GBS – Streaming Media capability (FMV)



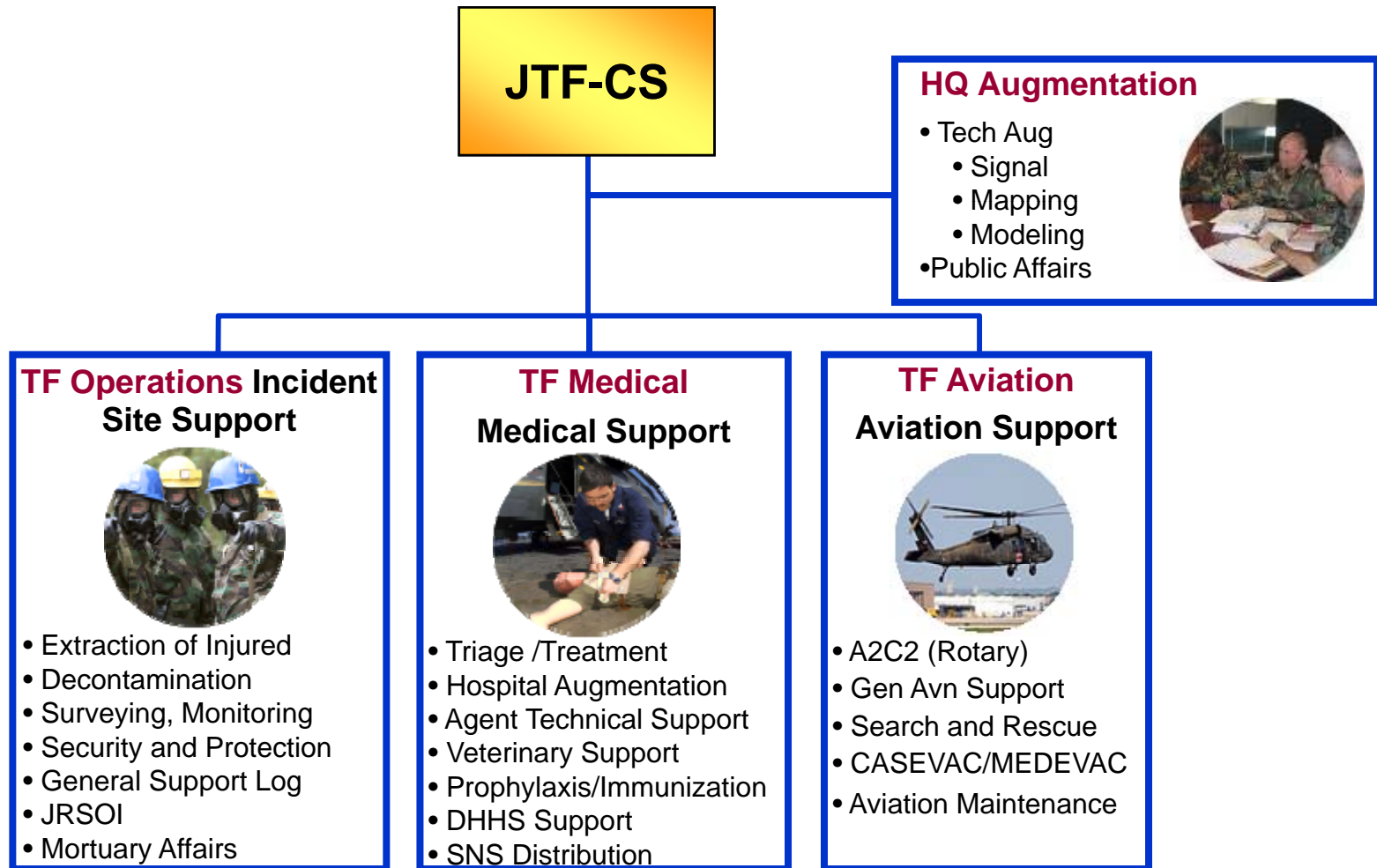
The Challenge of Disaster Relief



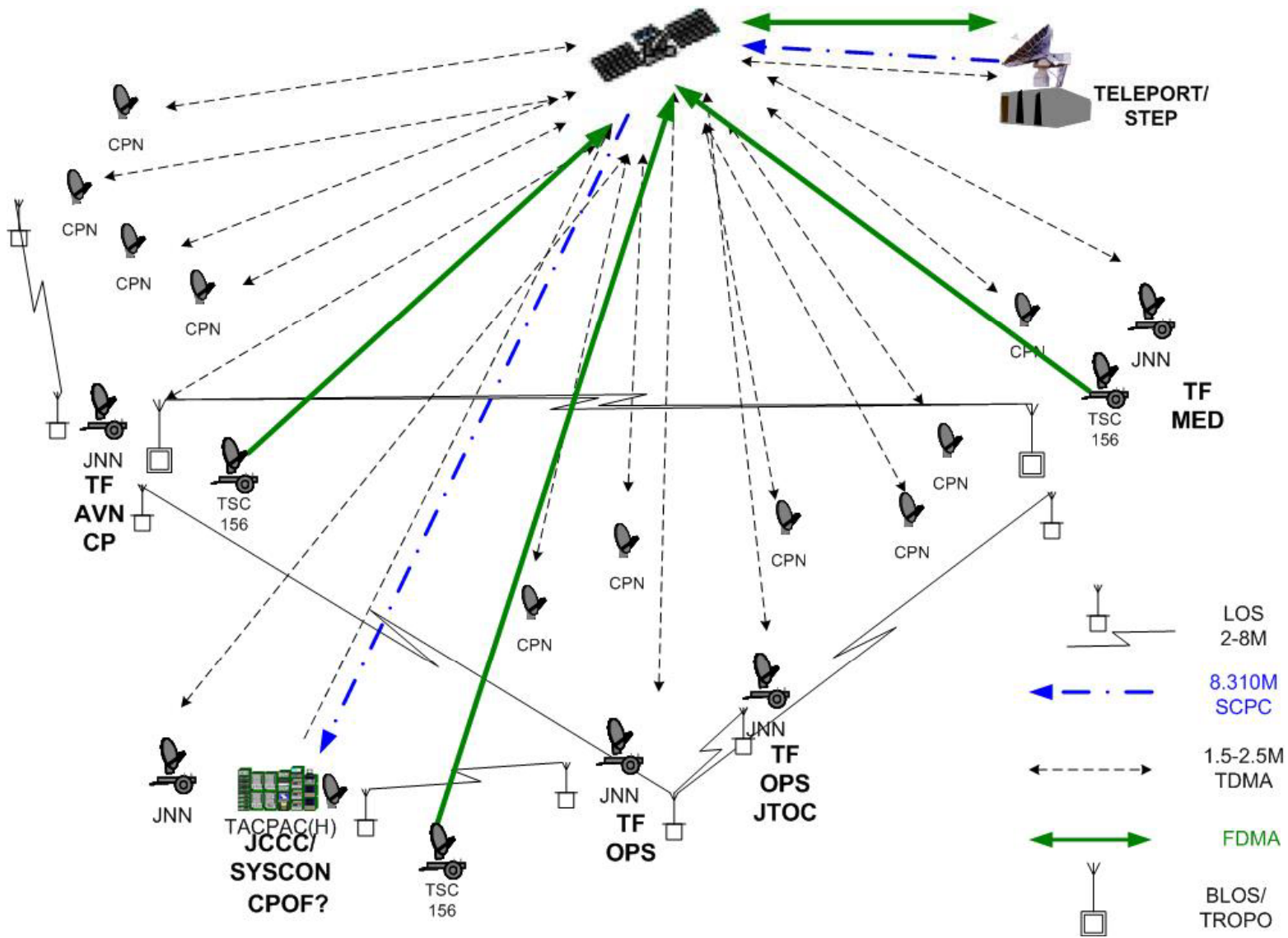
Numerous Players, Systems, Domains, and Enablers

CBRNE CM Response Force (CCMRF)

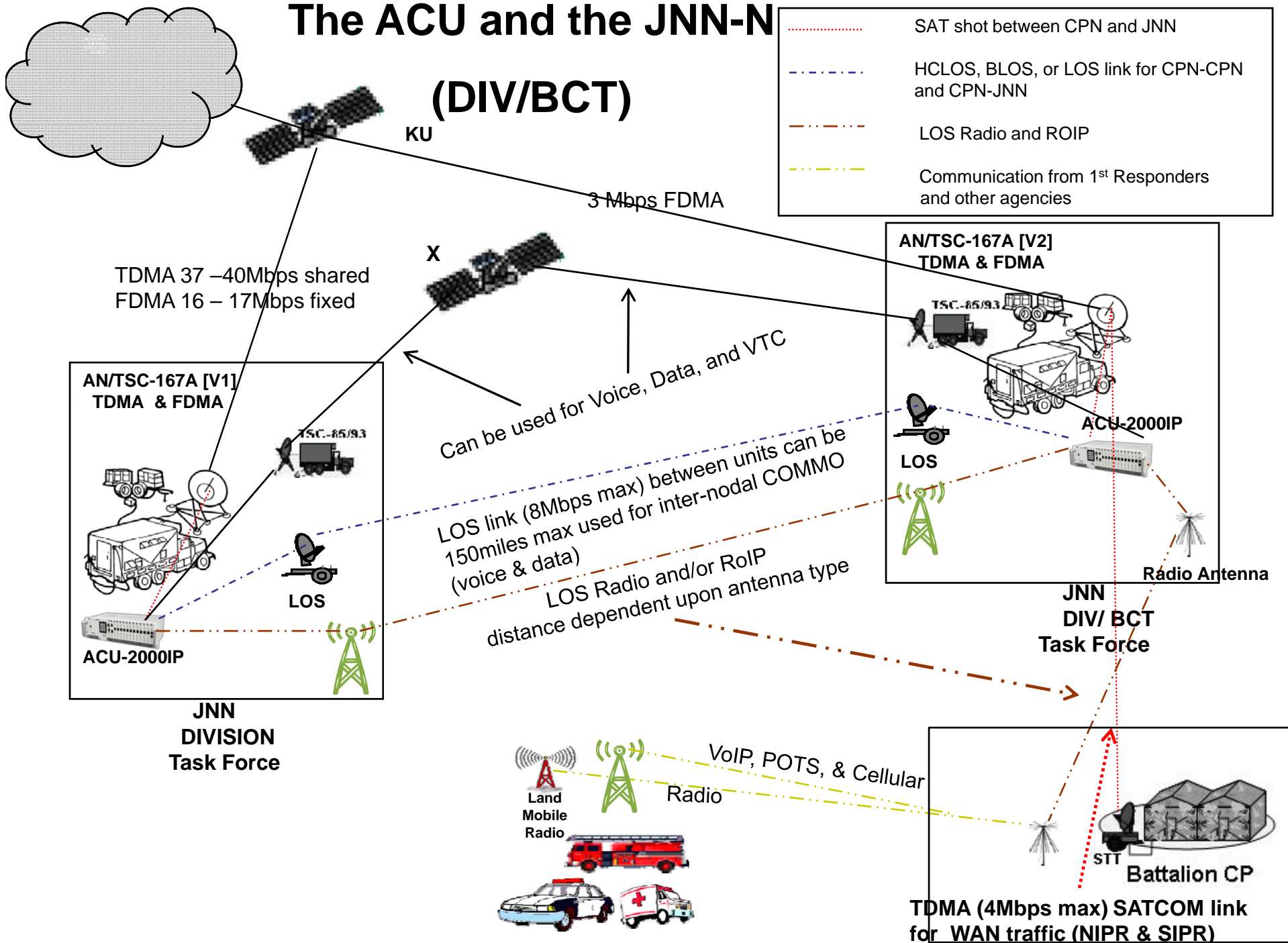
JTF-CS provides command and control, and coordination for the following types of tasks and requirements



JOA SATCOM ARCHITECTURE



The ACU and the JNN-N (DIV/BCT)



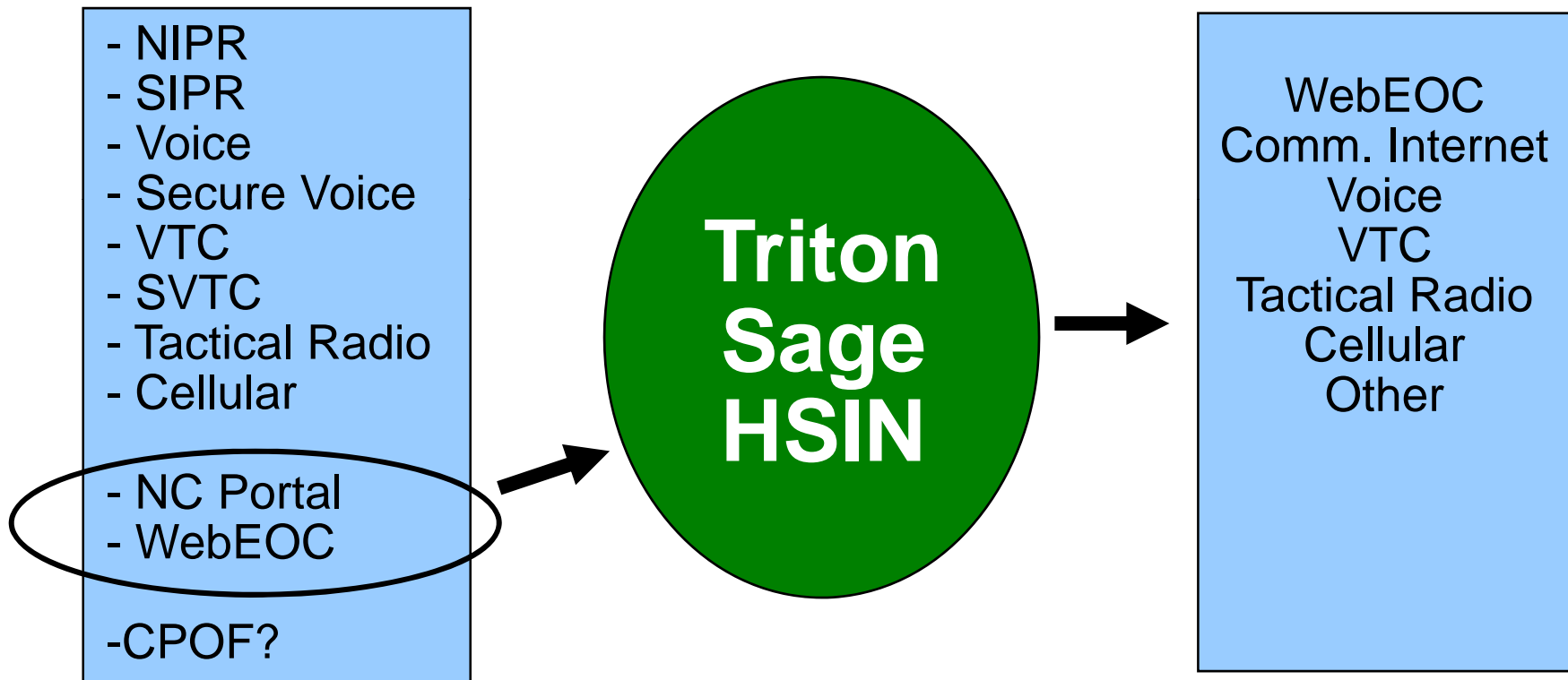


Information Sharing

Operational Level - COP

DOD

Non-DOD Partners



COP = GIS + Documents

Agenda



- J6 Mission / Vision / Goals / Tasks
- Deployable Communications Capabilities
- Concept of Employment
- **Manning**

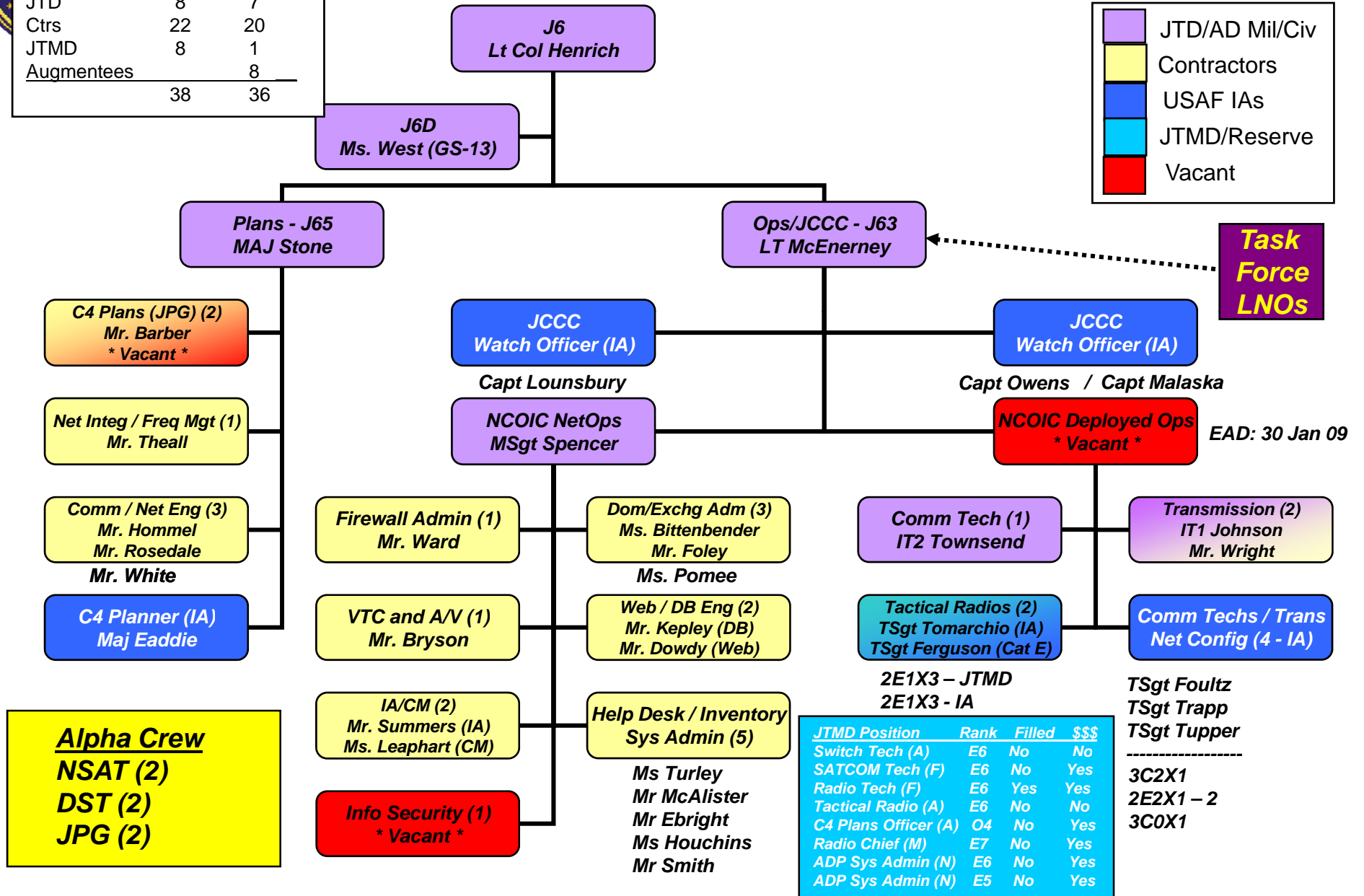


J6 Organizational Structure

As of 16 Oct 08

Type	Auth	Asgnd
JTD	8	7
Ctrs	22	20
JTMD	8	1
Augmentees		8
	38	36

	JTD/AD Mil/Civ
	Contractors
	USAF IAs
	JTMD/Reserve
	Vacant



JTMD Position	Rank	Filled	\$\$\$
Switch Tech (A)	E6	No	No
SATCOM Tech (F)	E6	No	Yes
Radio Tech (F)	E6	Yes	Yes
Tactical Radio (A)	E6	No	No
C4 Plans Officer (A)	O4	No	Yes
Radio Chief (M)	E7	No	Yes
ADP Sys Admin (N)	E6	No	Yes
ADP Sys Admin (N)	E5	No	Yes



Questions?